

Bletchley Park

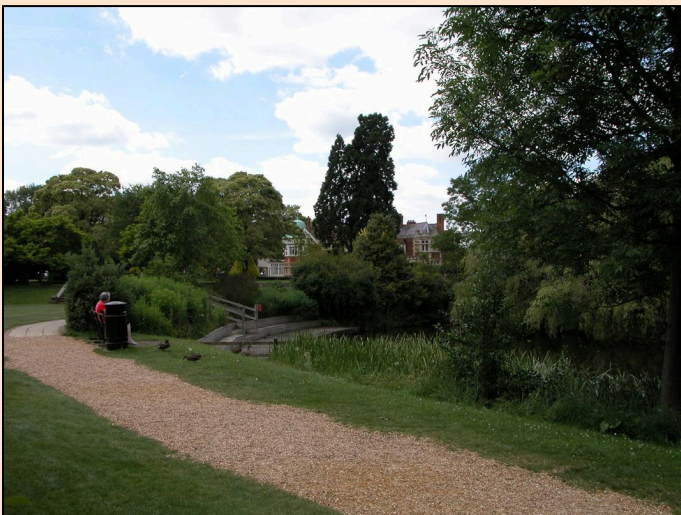
June 2014



A brief introduction before a conducted tour of the grounds.



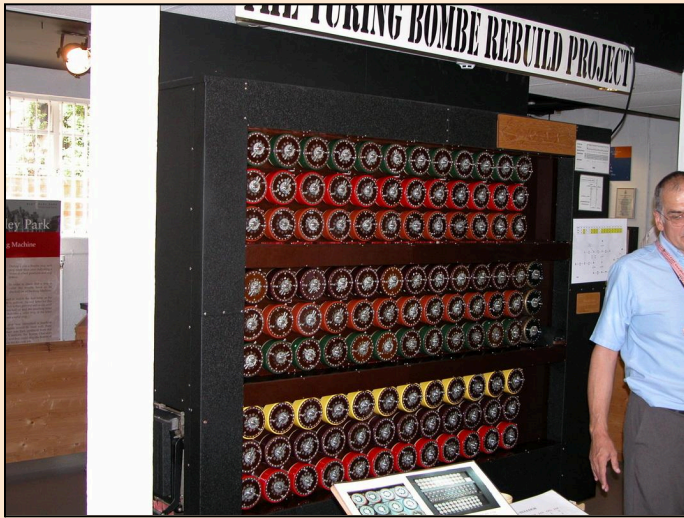
For many who worked at Bletchley Park and who were brought up in the 1930s, the environment must have seemed like a different world.



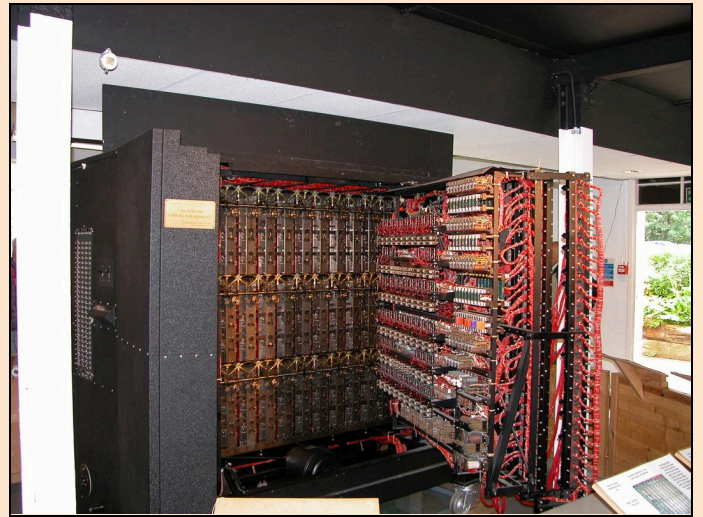
There were many social events and the grounds were ideal for relaxation and some sports activities.



These permanent buildings gradually replaced the original wooden huts. By the end of the war 10,000 people worked at Bletchley park (though most were split into three 8 hour shifts).



A front view of a bombe. These machines were used to break the codes of encrypted German communications. There are some notes about these machines in the write-up.



The back of a bombe showing how the electro-mechanical components were built up on "gates" which could be opened for easy maintenance. Many commercial computers in the 60s and 70s still adopted this technique before the era of electronic miniaturization began to take over.



